



OUTSTANDING PERFORMANCE

PANTOGRAPH REACH TRUCKS

1500 - 2000KG CAPACITY





REACH HIGHER, MOVE MORE WITH MORE COMFORT

Rediscovering Productivity

The Cat® ND18N-NR23N pantograph reach truck series features excellent lift speeds with high capacity retention and the ND18LN-NR23LN wide chassis model offers an optional multifunction control handle for operator preference and the capability of sit-down operation.

The Result?

The ability to significantly increase your throughput with a reach truck designed for comfort, longevity, efficient maneuverability and confident control.



ADVANTAGES TO YOU:

- 1500 – 2000 kg lift capacities
- Some of the fastest lift speeds in the industry - up to 0.84 meters/second
- Tough mast design with lift heights above 11 meters
- Sit-down operation capability for sustained comfort all shift long on wide chassis models
- Advanced AC motor technology for lower energy consumption
- Longer run times
- Intuitive controls for efficient handling
- Excellent stability for confident control

OPTIMIZED PRECISION SUPERIOR COMFORT



SION,



Rewriting The Standards

Cat lift trucks are designed with advanced AC technology to provide unique efficiencies and maximum uptime. The ND18(L)N-NR23(L)N line of reach trucks help you move more product with more run time and greater comfort.

POWERFUL AND DEPENDABLE DESIGN

- Advanced AC motors deliver higher performance levels, while consuming less energy.
- Sealed components offer greater reliability and help keep maintenance costs under control.
- Advanced regenerative braking returns kinetic energy to the battery when the truck slows down or reverses, leading to longer run times and greater throughput.

CONFIDENT HANDLING OF LOADS

These pantograph reach trucks provide superior load handling at high lift heights above 11 meters.

- With our exclusive ProTrac® suspended articulating axle, load weight is evenly balanced, leading to greater load stability on turns and when working in high lift heights.
- The sturdy mast is designed with cushioning at all mast stage transitions for smooth operation.
- Dual-articulating load wheels provide greater contact with the floor for more load force distribution.
- Industry-leading lift speeds, up to 0.84 meters/second, result in faster pickup and placement of loads.
- Automatic speed reduction and automatic parking brake provide additional control during operation.

CUSTOMIZE YOUR PERFORMANCE:

Three programmable performance levels

These pre-set performance levels provide greater flexibility and control, allowing you to adapt your settings for your specific application.

- **Program 1** - Ideal for transporting fragile goods or traveling in congested environments.
- **Program 2** - Presets average speeds to maximize uptime.
- **Program 3** - For use in applications that require maximum acceleration, throughput and travel/lift speeds.

* Customized performance settings may be available. Please contact your local dealer for full details.



Compact motor compartment for easy service

MADE FOR COMFORT FOCUSED ON EASE OF OP

Get More From Your Work Day

Designed with ergonomic features to maximize operator comfort and control, the ND18(L)N-NR23(L)N series makes it easier for operators working long shifts - while increasing productivity.



MORE CONTROL WITH SMOOTH AND QUIET OPERATION

Designed for a smooth, quiet ride, this reach truck series provides key features for greater comfort and less fatigue:

- Multifunction control handle options provide flexibility for drivers to operate the truck with the control handle they are most familiar with
- Pantograph system features extensive cushioning for smooth lowering and better protection of valuable loads



ENHANCED AWARENESS

The premium operator LCD display panel features key information in one easy-to-access location:

- Battery discharge and drive wheel direction indicators keep operators aware of their lift truck's performance at all times
- The optional tilt position assist and lift height indicator help operators remain informed and in control



CONFIDENT OPERATION

Smart designs that help improve productivity and comfort:

- Excellent maneuverability, outstanding visibility through the mast, to lifted loads through overhead guard, and all around
- Sit-down operation on the wide chassis models helps to provide even more comfort for operators, especially on long shifts



COMFORT, OPERATION

Small, ergonomically-positioned steering wheel for precise and relaxed handling

Multifunction control handle allows for regulation of multiple truck functions in the palm of your hand

Soft rubber back, arm and knee cushions encircle operators in comfort

Ergo-cushioned floor mat reduces operator fatigue

Low-entry step height for easy entry and exit

Ergonomically-Designed For Maximum Comfort

The reach truck's spacious operator cabin is loaded with features to increase comfort and convenience, including sit-down operation capability on wide chassis models. Less fatigue and easy handling make for a more productive work day.





MORE CONFIDENCE

Local Support You Can Count On

A Cat lift truck purchase connects you to a variety of material handling solutions, including worldclass service and support from your local, trusted dealer. With trained service technicians, a diverse parts inventory and a broad selection of service options, your local dealer can help you lower costs, enhance productivity and more efficiently manage your business.

PROFESSIONALS YOU CAN DEPEND ON

Cat lift truck dealers are unsurpassed, delivering superior customer service that sets them apart from the competition - before, during and after the sale. Cat dealers make available leading support programs with every new Cat lift truck you purchase, including:

- Genuine Cat lift truck OEM parts
- Planned Maintenance
- Rental fleet availability
- Convenient dealer location

PLANNED MAINTENANCE

Proper maintenance helps assure top performance over the long haul and helps extend vehicle longevity. That's why every Cat lift truck is backed by experienced and reliable dealers who make sure your truck is properly maintained. With Cat lift truck planned maintenance, you won't have to worry about scheduling maintenance or unexpected downtime. Regular planned maintenance calls are scheduled in advance to avoid interference with your company's operating schedules. Experienced Cat lift truck service technicians will regularly perform all periodic maintenance including fluid and lubricant checks when required. Cat lift truck technicians will even identify and fix potential problems before they become major and costly repairs.

† Programs may be subject to change without notice and may vary by region. Please ask your local Cat lift truck dealer for complete terms and conditions.

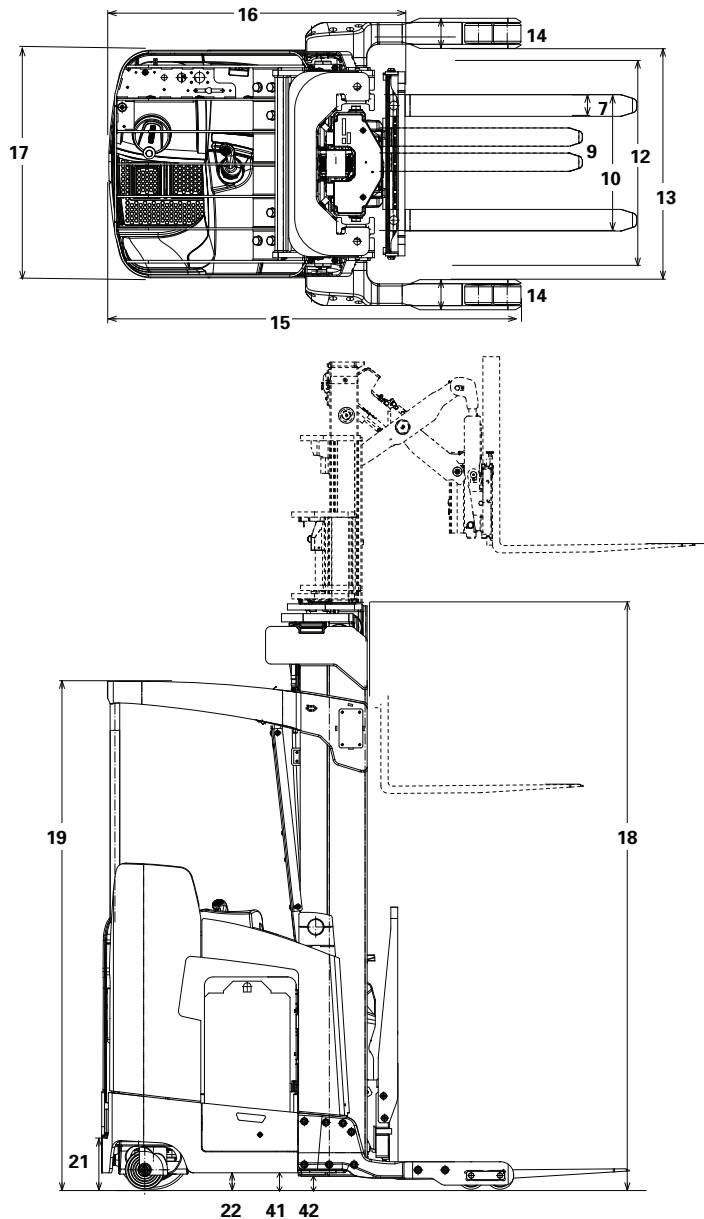
10 **Specifications**

Characteristics				NR20N		NR23N		NR23LN		ND18N	
1	Type			Single Reach		Single Reach		Single Reach		Deep Reach	
2	Power voltage			36		36		36		36	
3	Capacity at rated load center	lb	kg	4,000	1,810	4,500	2,040	4,500	2,040	3,500	1,580
4	Capacity load center – distance from fork face	in	mm	24	600	24	600	24	600	24	600
Dimensions				NR20N		NR23N		NR23LN		ND18N	
5	Maximum fork height	in	mm	450	11,430	450	11,430	450	11,430	450	11,430
6	Free fork height	in	mm	59	1,500	59	1,500	59	1,500	59	1,500
7	Fork width	in	mm	3.9	100	3.9	100	3.9	100	3.9	100
8	Fork thickness	in	mm	1.6	40	1.6	40	1.6	40	1.6	40
9	Fork spacing - out-to-out minimum	in	mm	12	305	12	305	14.2	360	12	305
10	Fork spacing - out-to-out maximum ¹⁾	in	mm	31.5	802	31.5	802	32.5	825	31.5	802
11	Tilt angle - forward / backward	deg		3° / 4°		3° / 4°		3° / 4°		3° / 4°	
11a	Reach stroke	in	mm	24	610	24	610	24	610	42	1,067
12	Mast width ²⁾	in	mm	32.2	816	32.2	816	32.5	825	32.2	816
13	Baseleg opening	in	mm	33 - 49	839 - 1,245	33 - 49	839 - 1,245	33 - 49	839 - 1,245	33 - 49	839 - 1,245
14	Baseleg width ³⁾	in	mm	5.5	140	5.5	140	5.5	140	5.5	140
15	Overall length	in	mm	76.1	1,932	76.1	1,932	77.4	1,967	78.1	1,983
16	Length to fork face	in	mm	55	1,397	55	1,397	56	1,422	62.3	1,582
17	Overall chassis width	in	mm	41.5	1,054	41.5	1,054	48	1,220	41.5	1,054
18	Overall lowered height	in	mm	107	2,720	107	2,720	107	2,720	107	2,720
19	Overall height to top of overhead guard	in	mm	95	2,413	95	2,413	92.5	2,349	95	2,413
20	Overall height with extended mast	in	mm	290	7,370	290	7,370	290	7,370	290	7,370
21	Step height	in	mm	9.8	250	9.8	250	9.8	250	9.8	250
22	Battery roller height	in	mm	7	178	7	178	7	178	7	178
23	Minimum outside turning radius	in	mm	70.74	1,797	70.74	1,797	73.1	1,858	70.74	1,797
24	Minimum aisle - 90° stack - zero clearance	in	mm	Please consult your Cat Lift Trucks dealer							
Performance				NR20N		NR23N		NR23LN		ND18N	
26	Grade clearance ⁵⁾	%		15.5		15.5		14		15.5	
27	Travel speed loaded / empty – standard ⁶⁾	mph	km/h	7.5 / 7.5	12.1 / 12.1	7.5 / 7.5	12.1 / 12.1	—	—	7.5 / 7.5	12.1 / 12.1
28	Travel speed loaded / empty – high performance ⁶⁾	mph	km/h	7.5 / 8.0	12.1 / 12.9	7.5 / 8.0	12.1 / 12.9	7.5 / 8.0	12.1 / 12.9	7.5 / 8.0	12.1 / 12.9
29	Lift speed loaded / empty – standard	fpm	m/s	75 / 120	0.38 / 0.60	75 / 120	0.38 / 0.60	—	—	75 / 120	0.38 / 0.60
30	Lift speed loaded / empty – high performance	fpm	m/s	90 / 165	0.45 / 0.83	90 / 165	0.45 / 0.83	90 / 165	0.45 / 0.83	90 / 165	0.45 / 0.83
31	Lower speed loaded / empty – standard	fpm	m/s	110 / 110	0.55 / 0.55	110 / 110	0.55 / 0.55	—	—	110 / 110	0.55 / 0.55
32	Lower speed loaded / empty – high performance	fpm	m/s	110 / 110	0.55 / 0.55	110 / 110	0.55 / 0.55	110 / 110	0.55 / 0.55	110 / 110	0.55 / 0.55
33	Gradeability - loaded / empty - maximum	%		9 / 9		9 / 9		9 / 10		9 / 9	
Weight				NR20N		NR23N		NR23LN		ND18N	
36	Truck weight - empty - without battery	lb	kg	7,050	3,200	7,050	3,200	7,050	3,200	7,400	3,350
37	Battery weight - minimum	lb	kg	2,000	910	2,000	910	2,000	910	2,000	910
38	Battery weight - maximum	lb	kg	2,300	1,050	2,300	1,050	2,300	1,050	2,300	1,050
Chassis				NR20N		NR23N		NR23LN		ND18N	
39	Chassis type (stand/sit)			Stand		Stand		Sit / Stand		Stand	
40	Wheelbase	in	mm	61.5	1,562	61.5	1,562	62.9	1,597	61.5	1,562
41	Ground clearance - center of wheelbase	in	mm	2.4	61	2.4	61	2.4	61	2.4	61
42	Ground clearance - lowest point at mast	in	mm	2.4	61	2.4	61	2.4	61	2.4	61
43	Tire size - steer	in	mm	13.5 x 5.5	343 x 140	13.5 x 5.5	343 x 140	13.5 x 5.5	343 x 140	13.5 x 5.5	343 x 140
44	Tire size - caster	in	mm	7 x 4	180 x 100	7 x 4	180 x 100	7 x 4	180 x 100	7 x 4	180 x 100
45	Tire size - load wheels	in	mm	5 x 3.62	127 x 92	5 x 3.62	127 x 92	5 x 3.62	127 x 92	5 x 3.62	127 x 92
46	Brake type			Electromagnetic Disc		Electromagnetic Disc		Electromagnetic Disc		Electromagnetic Disc	
Motors / Battery				NR20N		NR23N		NR23LN		ND18N	
47	Traction / pump / steer motor type			AC Induction		AC Induction		AC Induction		AC Induction	
48	Traction motor output (60 minute rating) – standard	hp	kW	6.0	4.5	6.0	4.5	9.2	6.9	6.0	4.5
49	Traction motor output (60 minute rating) – high performance	hp	kW	9.2	6.9	9.2	6.9	-	-	9.2	6.9
50	Pump motor output (5 minute rating)	hp	kW	27.2	20	27.2	20	27.2	20	27.2	20
51	Steer motor output (60 minute rating)	hp	kW	1.0	0.7	1.0	0.7	1.0	0.7	1.0	0.7
52	Battery maximum capacity - A/H (6 hour rating)			1,120		1,120		1,120		1,120	
53	Battery compartment (length x width x height) ⁷⁾	in	mm	16.25 x 38.42 x 31.65	413 x 976 x 804	16.25 x 38.42 x 31.65	413 x 976 x 804	16.25 x 38.86 x 34.17	413 x 987 x 868	16.25 x 38.42 x 31.65	413 x 976 x 804

NOTE: These specifications assume the use of drive axles, tires and tilt angles specified. Any modification to specifications, or any other combination of specifications made after the shipment of the truck, requires prior written approval from Mitsubishi Logisnext Americas Inc. (See ANSI/ITSDF B56.1). Also be advised that overall operating visibility may be affected by the mast configuration and mast options of your lift truck. Therefore, you may need to add ancillary [auxiliary] devices or modify your operating practices. Consult your dealer for further information.

NOTE Equipping this model (these models) with a power source (e.g. Lithium-ion, Hydrogen Fuel cell, etc) that has not been previously approved by the factory is considered a modification. Per OSHA 1910.178 and ANSI/ITSDF B56.1, please consult with your factory representative prior to installing any non-OEM power source that has not been previously approved.

ND18LN	
Deep Reach	
36	
3,500	1,600
24	600
ND18LN	
450	11,430
59	1,500
3.9	100
1.6	40
14.2	360
32.5	825
3° / 4°	
42	1,067
32.5	825
33-49	839 -1,245
5.5	140
79.4	2,018
63.3	1,607
48	1,220
107	2,720
92.5	2,349
290	7,370
9.8	250
7	178
73.1	1,858
ND18LN	
14	
—	—
7.5 / 8.0	12.1 / 12.9
—	—
90 / 165	0.45 / 0.86
—	—
110 / 110	0.55 / 0.55
9 / 10	
ND18LN	
7,400	3,350
2,000	910
2,300	1,050
ND18LN	
Sit / Stand	
62.9	1,597
2.4	61
2.4	61
13.5 x 5.5	343 x 140
7 x 4	180 x 100
5 x 3.62	127 x 92
Electromagnetic Disc	
ND18LN	
AC Induction	
9.2	6.9
—	—
27.2	20
1.0	0.7
1,120	
16.25 x 38.86 x 34.17	413 x 987 x 868



Safety Standards

These trucks meet American National Standards Institute/ Industrial Truck Standards Development Foundation, ANSI/ITSDF B56.1. Users should be aware of, and adhere to, applicable codes and regulations regarding operator training, use, operation and maintenance of powered industrial trucks, including:

- ANSI/ITSDF B56.1.
- NFPA 505, fire safety standard for powered industrial trucks – type designations, areas of use, maintenance, and operation.
- Occupational Safety and Health Administration (OSHA) regulations that may apply.

Specifications, equipment, technical data, photos and illustrations based on information at time of printing and subject to change without notice. Some products may be shown with optional equipment.

Add 9.1 in (230mm) for extended operator backrest

- 1) Maximum fork spacing 27.5 inches (698 mm) with 33 inch BLO.
- 2) Out-to-out dimension across mast outer channels.
- 3) 5.9 inches (150 mm) on single reach trucks with MFH over 332 inches (8430 mm).
- 4) 7.3 inches (186 mm) on single reach trucks with mast MFH above 332 inches (8430 mm).
- 5) Reduce grade clearance by 1.5% with 18.25 inch (463 mm) battery compartment length or 21.25 inch (539 mm) battery compartment length vs. 16.25 inch (412 mm) length.
- 6) Maximum speed attainable, after break-in period, varies with truck travel direction, weight, rolling resistance, mast height, options and battery condition.
- 7) 21.25 inch (539 mm) battery compartment length standard on chassis with MFH over 332 inches (8430 mm).



Cat Lift Trucks offers a complete range of durable lift trucks, from gasoline, LPG, diesel-powered and electric counterbalance lift trucks to warehouse equipment designed to handle your toughest applications. We know you demand uncompromising quality from lift trucks that maximise uptime and get the job done efficiently. Our rugged machines deliver day after day by providing you with all the lift-cycle cost of ownership benefits you've come to expect from Cat Lift Trucks.

LET'S DO THE WORK.™

**TOTAL MACHINE
SATISFACTION.**



© 2024 by Caterpillar. All Rights Reserved. CAT, CATERPILLAR, LET'S DO THE WORK, their respective logos, "Caterpillar Corporate Yellow", the "Power Edge" and Cat "Modern Hex" trade dress as well as corporate and product identity used herein, are trademarks of Caterpillar and may not be used without permission.

FCAT0213 (10/2024) Printed in Singapore

