

# UNITED

Forklift and  
Access Solutions

**UNITED**  
ALL TERRAIN *R-SERIES*



## United All Terrain Forklifts



LIFT YOUR GAME





## United R-Series All Terrain Forklifts

**United All Terrain** forklifts, available in **2.5 to 3.5 tonne** capacities, are purpose-built to thrive in the toughest environments. Engineered for strength and stability, they offer a rugged and dependable solution when operating on uneven surfaces and outdoor job sites. From mining and construction to agriculture and other demanding applications, these forklifts deliver outstanding performance, durability, and reliability—ensuring your operations stay productive, no matter the terrain.





# Operator Comfort



## Ergonomic Cabin

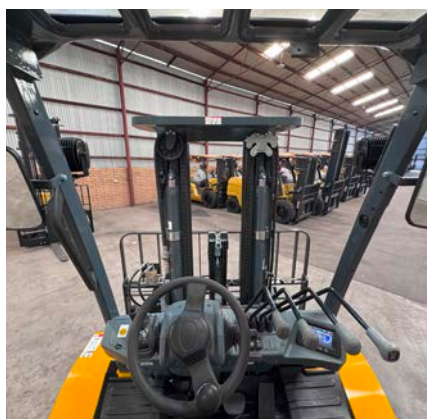
Offers a clean and open workspace as well as an easy-to-use control layout for enhanced efficiency.

## Comfortable Steering

Full hydraulic power steering ensures smooth, responsive handling. The steering wheel is adjustable and is equipped with a steering wheel knob for easy turning.

## Intelligent Shift Operation

Ensures smooth gear transition, easier operation, and superior operator comfort.



## Clear Visibility

An open cabin, clear view mast, and overhead guard, provide excellent all-directional visibility. Makes lifting and driving stress-free for the operator.



## Rear Horn Handle

Conveniently positioned on the back overhead guard, this rear grab handle allows operators to easily alert pedestrians and other operators when driving in reverse.



## Full Suspension Seat

Provides a smoother and more comfortable ride by minimising vibration and shock when operating over rugged terrain.

## Waterproof Full Colour LCD Screen

The high-resolution LCD display provides key operating information including indicators, alerts, and alarms. The operator can also adjust the backlighting and programmable menu to suit their needs.



	Engine coolant temperature
	Fuel level
	Oil temperature of drive axle
	LPG pressure
	Low break pressure
	Engine alarm
	Turning left
	Turning right
	Low fuel alarm
	Engine oil pressure alarm
	Preheating indication

	Charging indication
	Block of air cleaner
	Hand brake
	Seat switch
	Neutral indication
	Safety belt switch
	Hourmeter
	Oil and water separator
	DPF parking regeneration request
	Two-wheel drive switch
	Forcible no generation of DPF



Large Pattern All Terrain Tyres

Designed for efficiency across diverse terrains—including grass, mud, gravel, and sand—these tyres deliver reliable traction and perform in a wide range of applications.

Tight Turning Circle

A wide steering angle allows the operator to confidently manoeuvre in tight spaces or rugged environments.



Selectable 2WD & 4WD Switch

Allows operators to quickly respond to changing ground conditions for improved efficiency and traction.

Manual Differential Lock

Engages only when required, offering enhanced performance on all terrain while maintaining cost-efficiency.



Standard Drum Brakes

An ideal choice for a wide range of operating conditions, offering gentle, reliable stopping power and excellent cost of life advantages.

Standard Features		
Tilt cylinder boots	Larger pattern off-road tyre	Road lights
Overhead guard	Hub bridge (with differential lock)	USB
Toolbox	Carriage width 1600mm	Full suspension seat
Sideshift	1220mm Forks	Reversing buzzer
Horn	Two way valve	Tow pin



# Safety Features



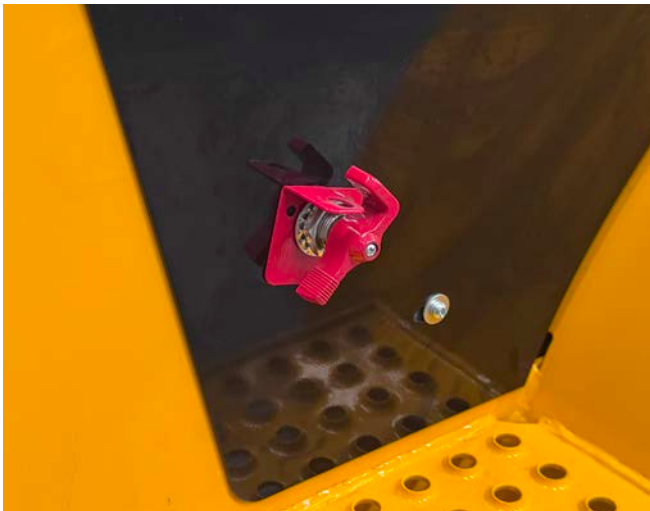
## Large Hand Grip, Nonslip Step & Rubber Floor Mat

The inclusion of a large hand grip, nonslip step, and textured rubber floor mat significantly enhances operator safety by reducing the risk of slips and falls when entering or exiting the forklift. These features are particularly valuable in challenging conditions such as wet, muddy, uneven, or rugged environments.



## Operator Presence Detection System

Forklift operation is automatically locked when the machine senses that the driver has left their seat. This ensuring the forklift is only operational when the driver is properly seated and the seatbelt has been engaged.



## Isolator Switch

The isolator switch completely cuts off the electrical supply to the forklift, helping to prevent injuries in the event of a malfunction. It also enables technicians to safely perform maintenance tasks without the risk of electric shock or other hazards.

## Optional Features

Semi & fully enclosed cabins	Solid tyres	Custom attachments
Air conditioning system	Cabin fan	LED lighting
Heater	Protection net for overhead guard	Fleet monitoring system
Fire extinguisher	Fork extensions	LED working lights
Overspeed warning	Speed limiting	Dual air cleaner

Machine Specifications

Character

1.02	Model			CPCD25	CPCD30	CPCD35
1.03	Rated Capacity	kg		2500	3000	3500
1.04	Load Center	mm		500	500	500
1.05	Power Type					
1.06	Operation Mode					

Dimensions

2.01	Lifting Height (standard)	H	mm	3000	3000	3000
2.02	Mast Overall Height (fork to the ground and mast be vertical)	H1	mm	2225	2225	2275
2.03	Max.Fork Lifting Height (with backrest)	H2	mm	4185	4375	4375
2.04	Free Lift Height	H3	mm	150	155	160
2.05	Overall Height	H4	mm	2420	2420	2420
2.06	Min.Ground Clearance (at the mast)	H5	mm	290	290	290
2.07	Distance From the Surface of the Seat to the Overhead Guard	H6	mm	1263	1263	1263
2.08	Traction Pin Height	H9	mm	450	450	450
2.09	Backrest Height (calculated from the surface of the fork)	H13	mm	1092	1282	1287
2.10	Overall Length (with fork/without fork)	(L/L')	mm	4164/3094	4224/3154	4229/3159
2.11	Wheel Base	L1	mm	1940	2000	2000
2.12	Front Overhang	L2	mm	584	589	594
2.13	Rear Overhang	L3	mm	540	575	575
2.14	Overall Width	W1	mm	1600	1600	1600
2.15	Tread (Front tread/Rear tread)	(W3/W2)	mm	1250	1250	1250
2.16	Fork Adjustable Range (the external of the fork) (max./min.)	W5	mm	1560/250	1560/250	1560/250
2.17	Min.Turning Radius (exterior)	r	mm	3513	3585	3585
2.18	Min.Turning Radius (interior)	r'	mm	1295	1295	1295
2.19	Min.Right Angle Stacking Aisle Width	Ra	mm	5589	5589	5594
2.20	Mast Tilting Angle	α/β	deg.	10/12	10/12	10/12
2.21	Fork Size	(L4xWxT)	mm	1070x122x40	1070x125x45	1070x125x50

Performance

3.01	Max.Traveling Speed (loaded/unloaded)	No differential lock	km/h	19	19	19
		With differential lock	km/h	18	18	18
3.02	Max.Gradeability (loaded/unloaded)	No differential lock	%	70	65	60
		With differential lock	%	38	38	36
3.03	Max.Drawbar Pull (loaded/unloaded)	No differential lock	kN	35	35	38
		With differential lock	kN	50	50	50
3.04	Lifting Speed (loaded/unloaded)	/	mm/s	504/510	510/560	420/450
3.05	Lowing Speed (loaded/unloaded)	/	mm/s	470/430	510/550	455/490

Weight

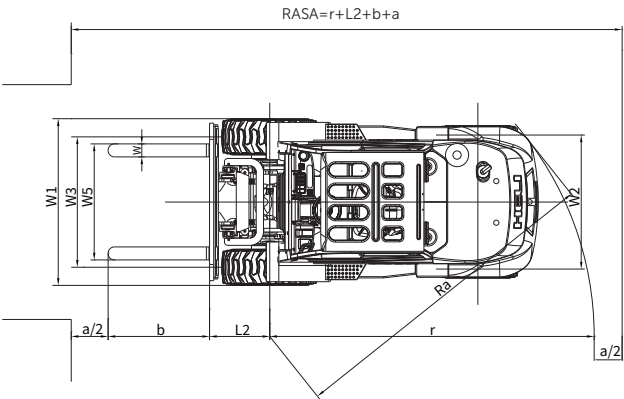
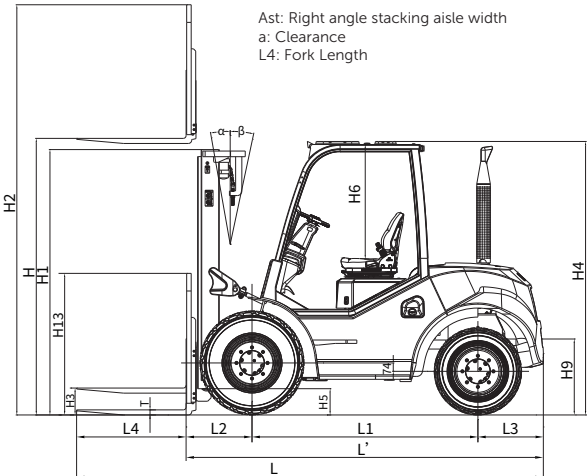
4.01	Total Weight	kg	5050	5400	5700
4.02	Weight Distribution Loaded (front/rear)	kg	6310/1240	6950/1450	7850/1400
4.03	Weight Distribution Unloaded (front/rear)	kg	2160/2890	2300/3100	2400/3350

Wheel & Tyre

5.01	Wheel Number x = Drive Wheel (Front/Rear)		2X/2
5.02	Tyre Type (front/rear)		Vacuum tyre
5.03	Tyre Size (front/rear)		14-17.5-16PR/10-15.5-10PR
5.04	Service Brake		Hydraulic-Foot Pedal
5.05	Parking Brake		Ratchet parking brake

Drive & Transmission Control Device (Standard configuration without differential lock, optional with differential lock)

6.01	Battery (voltage/capacity)	V/Ah	12/95
6.02	Engine Model		ISUZU 4JG2PE-02
6.03	Engine Rated Power	kW/rpm	44.9/2450
6.04	Engine Rated Torque	Nm/rpm	184.7/1700
6.05	Emission		Euro II
6.06	Transmission Box Shifting Gears (front/rear type)		2-1Power Shift



Wide View Mast

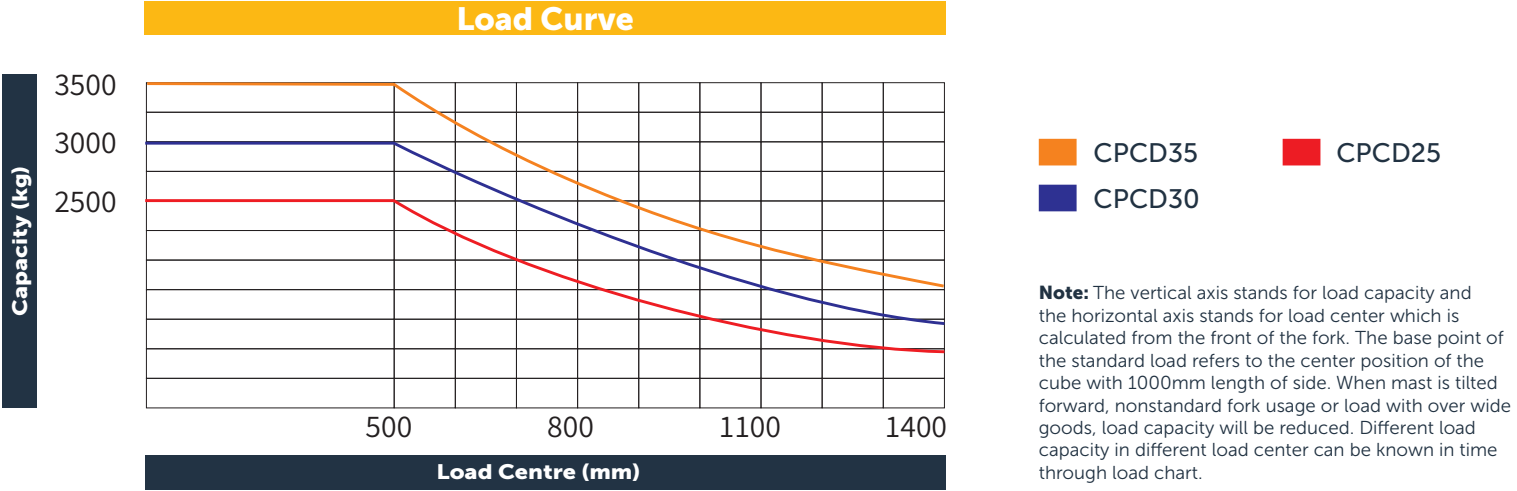
Mast Model	Lifting Height (mm)	Load Capacity (load center 500mm) (kg)			Mast Overall Height (fork to the ground)(mm)		Service weight (kg)			Mast Tilting Angle (°) α/β
		2.5t	3t	3.5t	2.5-3t	3.5t	2.5t	3t	3.5t	
M300	3000	2500	3000	3500	2230	2280	4920	5500	5850	10/12
M330	3300	2500	3000	3500	2380	2430	4980	5560	5910	10/12
M350	3500	2500	3000	3500	2480	2530	5000	5580	5920	10/12
M370	3700	2500	3000	3500	2580	2630	5020	5600	5940	10/12
M400	4000	2500	3000	3500	2780	2830	5090	5670	6010	10/12
M450	4500	2500	3000	3500	3030	3080	5130	5710	6060	10/12
M500	5000	2100	2600	3300	3280	3330	5180	5760	6100	10/10
M550	5500	1800	2300	2650	3580	3630	5270	5850	6190	10/10
M600	6000	1400	1900	2050	3830	3880	5310	5890	6230	10/10

Wide View Full Free 2-Stage Mast

Mast Model	Lifting Height (mm)	Load Capacity (load center 500mm) (kg)			Mast Overall Height (fork to the ground) (mm)		Free lifting height (with backrest) (mm)			Service weight (kg)			Mast Tilting Angle (°) α/β
		2.5t	3t	3.5t	2.5-3t	3.5t	2.5t	3t	3.5t	2.5t	3t	3.5t	
ZM300	3300	2500	3000	3500	2230	2280	940	840	943	4970	5550	5820	10/12
ZM330	3500	2500	3000	3500	2380	2430	1090	990	1093	5000	5580	5850	10/12
ZM350	3700	2500	3000	3500	2480	2530	1190	1090	1193	5020	5600	5870	10/12
ZM370	4000	2500	3000	3500	2580	2630	1290	1190	1293	5040	5620	5890	10/12
ZM400	4000	2500	3000	3500	2780	2830	1490	1390	1493	5120	5700	5970	10/12

Wide View Full Free 3-Stage Mast

Mast Model	Lifting Height (mm)	Load Capacity (load center 500mm) (kg)			Mast Overall Height (fork to the ground) (mm)		Free lifting height (with backrest) (mm)			Service weight (kg)			Mast Tilting Angle (°) α/β
		2.5t	3t	3.5t	2.5-3t	3.5t	2.5t	3t	3.5t	2.5t	3t	3.5t	
ZSM360	3600	2500	3000	3500	2030	2030	740	640	640	5290	5650	5940	10/12
ZSM400	4000	2500	3000	3500	2180	2180	890	790	790	5330	5690	5980	10/12
ZSM435	4350	2500	3000	3500	2280	2280	990	890	890	5360	5720	6010	10/12
ZSM450	4500	2500	3000	3500	2330	2330	1040	940	940	5370	5740	6020	10/12
ZSM470	4700	2500	3000	3400	2390	2390	1100	1000	1000	5390	5760	6040	10/12
ZSM500	5000	2100	2600	3300	2530	2530	1240	1140	1140	5430	5790	6080	10/10
ZSM540	5400	1600	1900	2700	2630	2630	1340	1240	1240	5460	5820	6110	10/10
ZSM600	6000	1100	1500	2000	2830	2830	1540	1440	1440	5560	5930	6210	10/10





**WE'RE UNITED BEHIND YOUR BUSINESS**



**☎ 131 607**

**unitedequipment.com.au**

**SALES | RENTALS | SERVICE | PARTS | FINANCE | TRAINING**

**WE BRING MORE OF THE WORLD'S BEST TO YOU**



**KONECRANES®**

**Haulotte** 

**ALMACRAWLER** 

**ELEVAH**



**WA**

Perth  
Bunbury

**NT**

Darwin

**SA**

Adelaide

**QLD**

Brisbane  
Toowoomba  
Rockhampton  
Mackay Cairns

**NSW**

Sydney  
Newcastle

**VIC**

Melbourne East  
Melbourne West  
Ballarat

**TAS**

Devonport  
Hobart