

UNITED

Forklift and Access Solutions



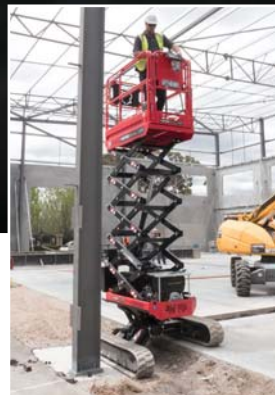
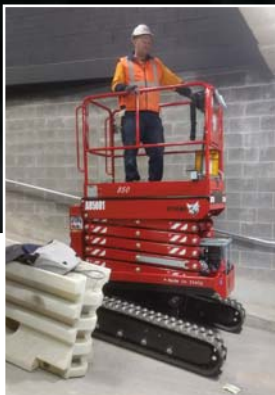
ATHENA 850

INTRODUCING THE WORLD'S MOST VERSATILE AND PRODUCTIVE SCISSOR LIFT

THE ATHENA BI LEVELLING TRACKED SCISSOR LIFT

The **Athena 850** is a unique bi-levelling, compact scissor lift designed with a multitude of applications in mind. Construction sites, hire companies, agriculture and facilities maintenance providers now have access to one of the most versatile and safe access machines in the world. A platform capacity of a 250 kg and working height of 8 meters means that two men can get up and get to it... rain, hail or shine. The Athena is simple to control and extremely adaptable to difficult and undulating terrain indoors and out. Their structure has been designed to resist overload thanks to high resistance steel lifting mechanisms. Athena crawler lifts include a 220V-2.2Kw motor pump which makes it possible to operate the machine indoors or in areas where the use of diesel engines are not allowed. The 220V current generator enables the operator to use electric tools at heights so there is no need for local power sources and associated leads.

Takes on challenging terrain like no other scissor lift on the market



BEST NEW INTERNATIONAL AND AUSTRALIAN PRODUCT AWARD WINNER 2016



Watch the video

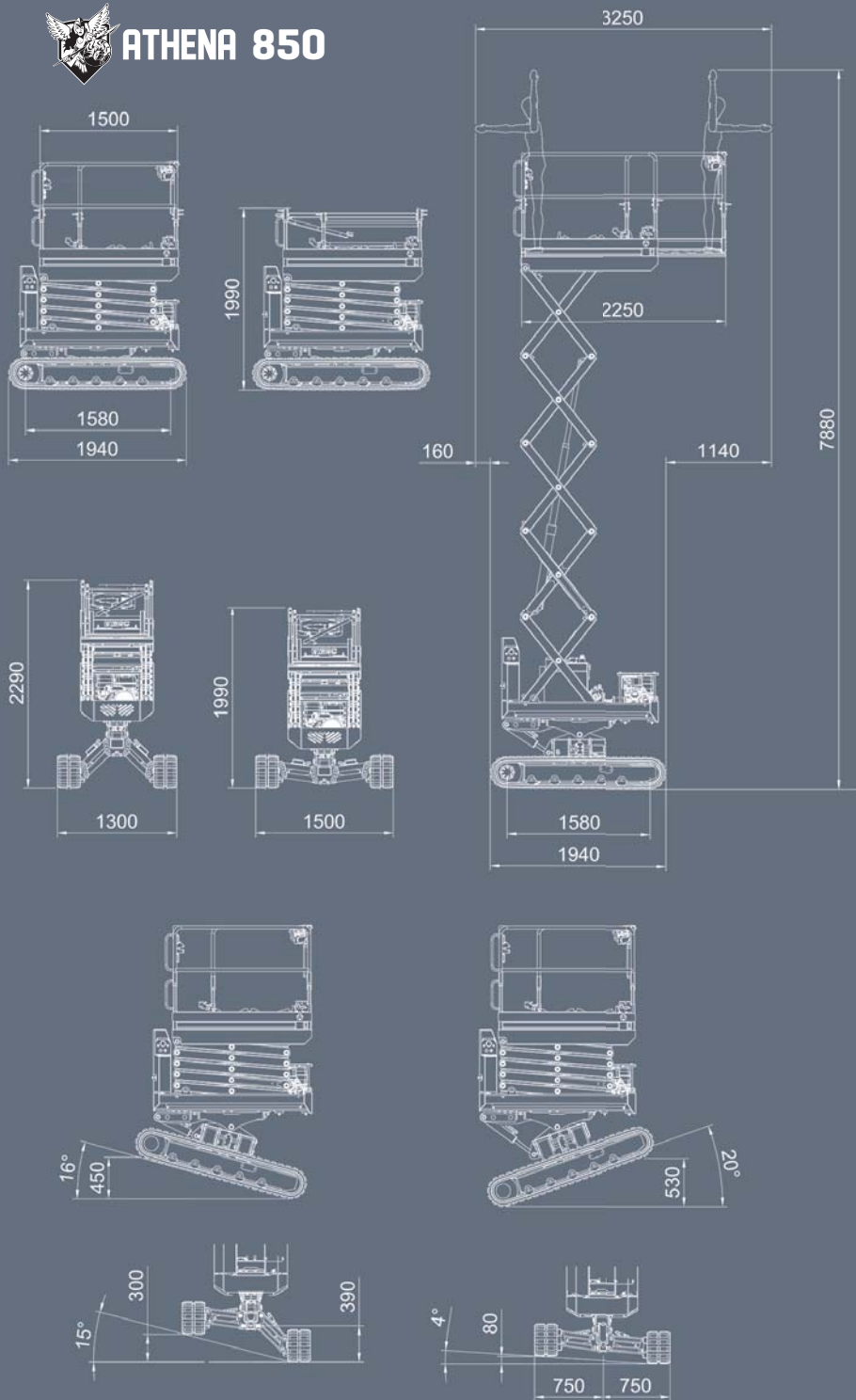
Use a mobile phone QR reader to scan the code



UNITED It's all about you



ATHENA 850



Technical Data

Working height	7.90 m
Platform height	5.90 m
Moving height	6.10 m
Platform width	0.78 m
Platform length	1.50 m
Platform length - Extended	2.25 m
Length extension	0.75 m
Overall length	1.94 m
Minimum width	1.30 m
Height stowed	2.29 m
Engine	Diesel Hatz 1B40
Lateral levelling for moving at heights	+/- 4°
Automatic levelling	2 axis
Longitudinal levelling	+/- 16° front +/- 20° rear
Lateral levelling	+/- 15°
Auxiliary electric pump	220V-2Kw
Power generator	220V-1Kw
Gradeability	25°
Side slope	21°
Total weight	1990 kg
Compliance	AS1418.10-2011

Features

- ▶ Automatic accelerator
- ▶ Bi-levelling undercarriage
- ▶ Electrohydraulic proportional commands
- ▶ Direction control system
- ▶ Easy drive system
- ▶ Ground emergency
- ▶ Automatic control of inclination
- ▶ Minimum width 1300mm

Ideal Usage

- ▶ Hire companies
- ▶ Tradespeople
- ▶ Orchards and vineyards
- ▶ Landscapers
- ▶ Facilities maintenance
- ▶ Painters

UNITED

Forklift and
Access Solutions

131 607

www.unitedequipment.com.au

SALES | RENTALS | SERVICE | PARTS | FINANCE | TRAINING
Perth | Bunbury | Melbourne | Ballarat | Sydney | Brisbane | Darwin