



### Performance and productivity

- Best load capacities
- Rear axle lock and tilt corrector in standard
- Flow Sharing in standard enabling a simultaneous and proportional control of 4 movements

### Powerful and robust

- High strength monoblock chassis
- Rough terrain capacities
- Hydrostatic transmission and inching pedal

### Comfort and ergonomoy

- Driving position reducing fatigue at work
- LMI easy to read including automatic cut off dangerous movements
- Smart control 4 in 1 Joystick
- High safety cab



Placing height : 13.6 m



Maximum lift capacity :  
4000 kg

**Haulotte**   
GROUP  
More than lifting



# HTL 4014



## TELEHANDLER

# Haulotte

  
GROUP

Placing height : 13.6 m

Maximum lift capacity : 4000 kg



## PERFORMANCES

Maximum lift capacity	4000 kg
Lift capacity to full height	3000 kg
Lift capacity at full reach	1000 kg
Maximum fork height	13.6 m
Reach at maximum fork height	1.5 m
Maximum forward reach	9.8 m



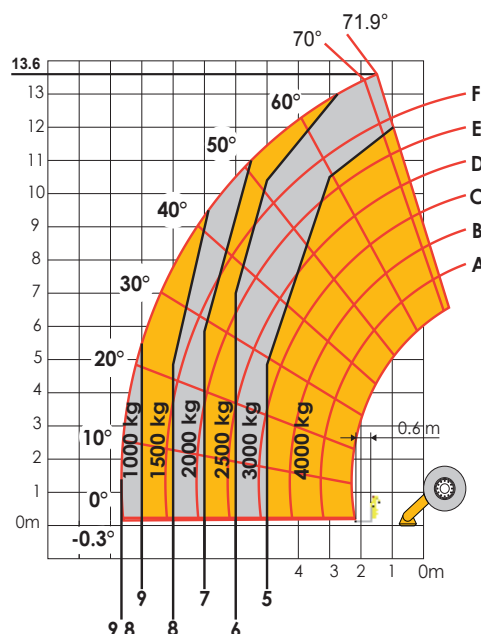
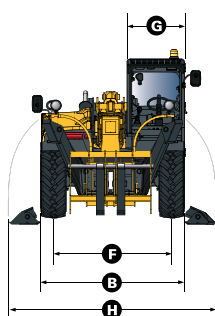
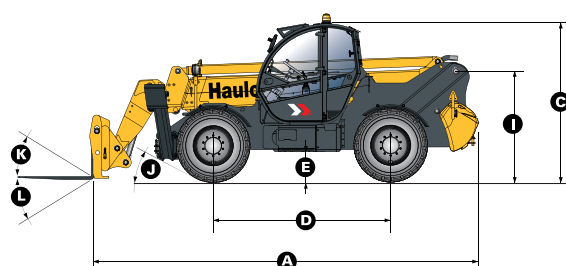
## DIMENSIONS

<b>A</b> Length	6.46 m
<b>B</b> Width	2.43 m
<b>C</b> Height	2.6 m
<b>D</b> Wheelbase	2.89 m
<b>E</b> Ground clearance	50 cm
<b>F</b> Track width	1.93 m
<b>G</b> Cab width	0.96 m
<b>H</b> Overall width - stabilizers down	3.34 m
<b>I</b> Height to high boom pivot	1.75 m
<b>J</b> Approach angle	29 °
<b>K</b> Upper rotation of forks	18 °
<b>L</b> Lower rotation of forks	104 °
Weight with forks	10420 kg
Tyres type	400/80-24



## ENGINE

	TIER III	TIER IV
Engine model	PERKINS	KOHLER
Engine Capacity	4400 cm3	3400 cm3
Engine power output	70 kW	55,4 kW
Engine torque	392 Nm	380 Nm
Transmission type	Hydrostatic	
Fuel tank	130 l	130 l
Engine oil	7 l	15 l



## STANDARD EQUIPMENT

- Hydrostatic transmission
- 4 wheel drive and steer
- Simultaneous and proportional controls for boom / telescopic arm / excavation and accessories movements
- Safety valves on hydraulic jacks
- Auxiliary hydraulic system in standard
- Cut-off of dangerous movements when overloaded
- Tilt corrector:  $\pm 10^\circ$
- ROPS/FOPS cabin with heating and ventilation
- Hydraulic rear axle locking

## OPTIONS AND ACCESSORIES

- Cold Weather Package
- Biodegradable oil
- Cold environment oil
- Hot environment oil
- Air conditioning
- Working lights
- Metal windscreen protector (FOPS)
- Buckets
- Tools carriage with integrated hook

# UNITED

## Forklift and Access Solutions

# 131 607

[www.unitedequipment.com.au](http://www.unitedequipment.com.au)

SALES | RENTALS | SERVICE | PARTS | FINANCE | TRAINING  
Perth | Bunbury | Melbourne | Ballarat | Sydney | Brisbane | Darwin